

5 String Fiddle (tuned down a semitone)

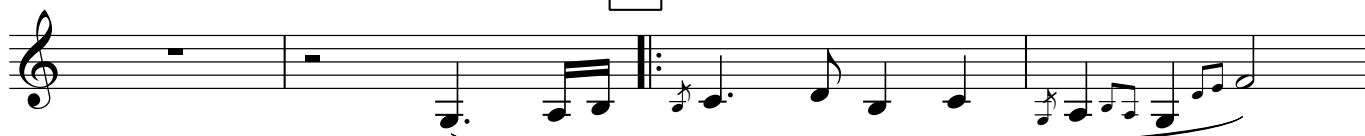
# Spectrum

Composed in praise of Beinn Eighe

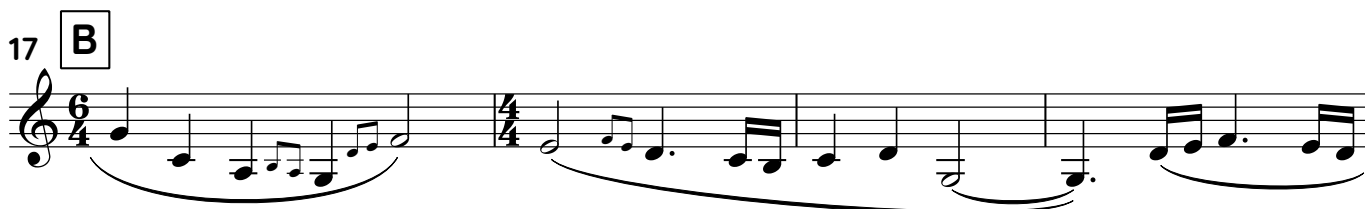
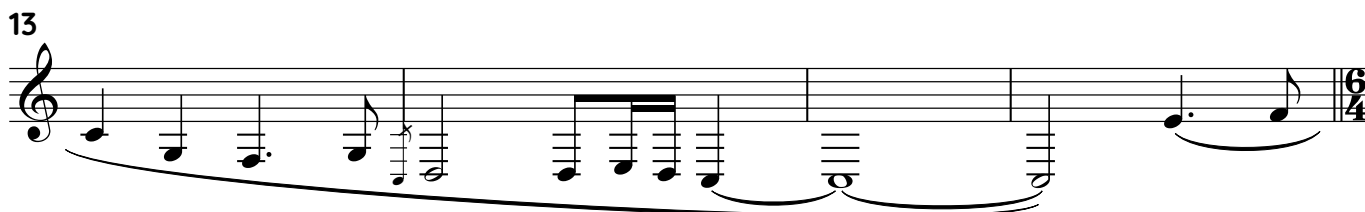
Please note the 5-string fiddle part given here is a transposing score. It is written in C major here, but the piece is in B major in the recording provided. The 5-string fiddle must be tuned down a semitone so that it sounds in B major, i.e. it is played with C major fingering but sounds as B major. There is also a non-transposing score available that is purely in B major.

Composed by Marie Feilding

Slow air



To be played expressively with rubato



Fine

D.S. al Fine